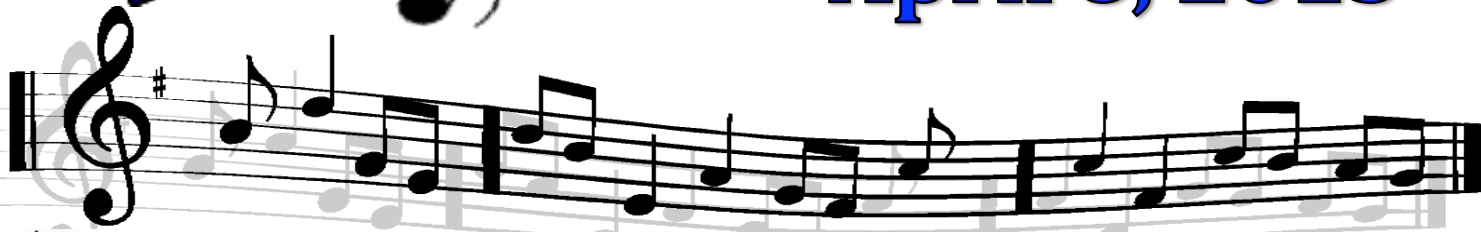


The Band Buzz



April 8, 2013



Wed, April 10

This week at-a-glance:

PARENT/BOOSTER meeting, 7:00 BAND ROOM / important info on new online system will be shared! - note location change!

MARCHING BAND REGISTRATION INFO:

NEW MEMBER REGISTRATION: Mon, April 22, 6:00
RETURNING MEMBER REGISTRATION: Thurs, April 25, 6:00

In the cafeteria...mark your calendars...more info to follow!



CONGRATS to our winter teams:

- ☺ WLP World Line - State Champions
- ☺ WLP A Line 3rd in state, season high score!
- ☺ Winter Guard Open Line - State Champions
- ☺ Winter Guard A Line 10th in state

We are so proud of all of you!

You are invited to the

2013 FRIENDS AND FAMILY SHOW!

All winter teams (percussion and color guard) will perform their shows on

Wednesday, April 17, 7:30 pm at WL CENTRAL!

Show is free...come and wish our teams good luck as they head to the state championships this weekend!

MARCHING BAND MENTOR PROGRAM...

WE NEED YOU!

Current BAND MEMBERS...email Andi Mara at goband@wlcbands.com to be part of this exciting new program!

CHECK CALENDAR ON WEBSITE FOR:

- Summer Rehearsal Schedule
- Fall Competition Schedule
- Home Football Games
- Other Important Dates!

www.wlcbands.com



CONTACT MISSY MERGNER FOR MORE INFO ON BEING A BINGO CHAIRPERSON AND EARNING UP TO **\$100 PER WEEK!**
Bingo@wlcbands.com

BAND CAMP DATE CHANGE!

We will be going to Camp Timbers **Tues, Aug 13 - Fri, Aug 16.** There will be a rehearsal on Mon, Aug 12 and we will be loading truck for camp following rehearsal.

MARK YOUR CALENDARS:

Wed, April 17, 7:30 pm FRIENDS & FAMILY CONCERT @ WL CENTRAL
Mon, April 22, 6:00 pm NEW MEMBER REGISTRATION, cafeteria
Thurs, April 25, 6:00 pm RETURNING MEMBER REGISTRATION, cafeteria
Wed, May 1, 7:00 pm Parent/Booster meeting, cafeteria
Fri, May 10, Jazz Band Dinner and Concert - ticket info TBA
Thurs, May 16, 7:00 pm Spring Concert, auditorium